

AQUAFIN®-CJ7

CORROSION-RESISTANT, ACTIVE CRYSTALLINE WATER STOP JOINT SHEET FOR WATERPROOFING BOTH HORIZONTAL AND VERTICAL CONSTRUCTION JOINTS

Product Description:

- Simple application.
- High adhesion to concrete.
- Additional sealing function through the crystalline coating.
- Suitable for fresh water and salt water.

Area of Use:

AQUAFIN®-CJ7 is used for interior waterproofing of construction joints in concrete structures which are subject to continuous or occasional exposure to groundwater, hillside water and/or surface water. AQUAFIN®-CJ7 is suitable for applications of usage class A, wear classes 1 and 2 in accordance with the technical rules for concrete structures that are impermeable to water, from the German committee for reinforced concrete (*1).

Technical Properties:

Shape	: Rectangular and flexible
Dimensions	: 1.25 × 2,000 × 150 mm
Material	: galvanised sheet steel with special coating on both sides on a cementitious basis.
Toxicity	: None
Reaction to fire	: Class E in accordance with EN 13501-1
Packaging	: Individual sheets, each 2 meters = 50 m / box 25 sheets.
Storage	: Dry, frost-free and protected from weather influences, unlimited storage period.

Application:

Horizontal Joint:

Installation Prior to Concreting:

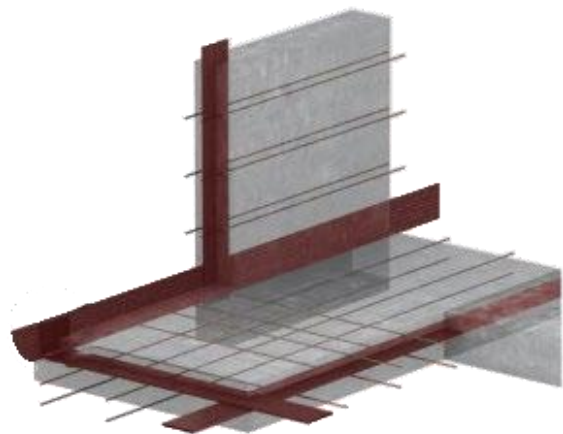
The joint sheet can be installed centrally in the joint before concreting and fastened in place with the help of the omega clamps or retaining clips. In doing so, concrete inclusion of >3 cm must be guaranteed. Joints are to be overlapped with >5 cm.

Vertical Joint:

Installation Prior to Concreting:

For vertical installation, the joint sheet must be installed prior to concreting and can be fastened in place with the help of omega clamps or retaining clips using the reinforcement as support. The joint sheet must be placed centrally along the joint and must be embedded to allow for a minimum of 3 cm concrete inclusion. Joints are to be overlapped with >5 cm.

Refer to the image below for horizontal and vertical application of the Joint Sheet.



Wet Concrete:

The joint sheet can also be installed immediately after concreting when the concrete is still in a liquid state. In doing so, concrete inclusion of >3 cm must be guaranteed. Joints are to be overlapped with >5 cm (refer to the image below). In the case of rounded parts and corner constructions, simply bend the AQUAFIN®-CJ7 into the corresponding shape.

Refer to the image below for installation in wet concrete.



*In the case of rounded parts and corner constructions, simply bend the AQUAFIN®-CJ7 into the corresponding shape (refer to the image below).



Notes:

- The joint sheets should be stored dry as a matter of principle.
- Can not be used in cold joints.
- The joint sheets must be arranged perpendicular to the construction joints. With the exception of larger rafts with a segmented pouring method, the joint sheet can be placed parallel to the horizontal reinforcement given the sheet is placed centrally.
- Joint sheets are not suitable for movement joints.
- The current applicable regulations and datasheets are to be observed.

*Refer to the images below for the application of both omega clips and clips on the joint sheet.

Holding Omega Clip:



Overlap Clip:

